

QI Newsletter

Issue 6 | January 2026

Dear Parents/Carers,

As we begin the Spring term, we would like to thank you for your continued support and positive engagement with the school. It has been lovely welcoming the children back after Christmas and hearing all the exciting things they got up to over the winter break.

The children's Interim Reports will be sent home on 30th January, outlining their progress so far this academic year. Attendance Certificates for the Autumn Term will also be included. For a small number of our learners, this certificate may highlight concerns relating to punctuality or attendance, and where this has been identified we appreciate your support in addressing these where necessary. Please contact us if we can help in any way.

We are delighted that the majority of parents have booked a Parents' Evening consultation for **5th, 10th and 11th February**, and the teachers look forward to meeting with you to discuss your child's progress and next steps. These meetings are an important opportunity to discuss the progress your child is making and further strengthen the partnership between home and school. As usual we invite you to pop in to see your child's recorded learning at our **Year 1 – 6 'Book Look' on Wednesday 4th February between 3:15 and 3:35pm**. We hope to see you then.

We look forward to working together for another successful and productive term 😊

Mrs Allen

For Information



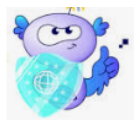
Arbor Parent Portal Communication – We have been notified that that some Arbor emails are being sent to people's **junk or spam folders**. Please check your email settings and mark Arbor messages as *not junk* so that future communications appear in your inbox. To ensure you receive messages through the **Arbor app**, please check that **notifications are enabled** in your app settings. Thank you.



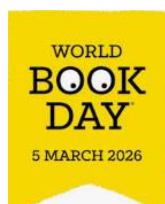
School Meal Price Increase – Effective from **1st April 2026**, the cost of school meals will increase to £3.38 per meal. If you are in receipt of income related benefits (excluding Working Tax Credit), please check to see if you are eligible for **Free School Meals**.



February Half Term Holiday Club – Available to book now with EdActive! Fun, active days for children, with prices starting from £25 per day. Find out more and book at <https://edactive.co.uk/holidays/>



Safer Internet Day 10th Feb – As part of our ongoing focus on Internet Safety, Mrs Newland will be leading assemblies for both KS1 and KS2 and sharing activities to help the children keep themselves safe online. For more information please take a look at <https://saferinternet.org.uk/guide-and-resource/parents-and-carers>



World Book Day – In the first week of February, children will receive a £1 book token, redeemable for a free World Book Day book or £1 off any book between 12th February and 15th March 2026.

On **Thursday 5th March 2026**, children are invited to dress up as a favourite book character. Dressing up is optional — school uniform may be worn as usual 😊

Costume donations are very welcome and can be handed to the school office for the PTA. Thank you.



Parking and Speeding – Reminder Residents have reported that some parents are speeding on roads near the school, which is unsafe and unacceptable. Please drive slowly and courteously.

Also, the curb outside the Parent Car Park is a no-parking zone during pick-up. Please park considerately to keep footpaths clear and respect our neighbours.



Post-Christmas Treat – Pantomime As a special post-Christmas treat, every child enjoyed a pantomime production of Cinderella performed by Umbrella Theatre Productions Ltd, kindly funded by our wonderful PTA.

PTA Updates

PTA Apology – Present Buying Day

The PTA would like to apologise for a book titled *Grin and Beard It* by Penny Reid, which was purchased by some families during Present Buying Day. It has since been brought to our attention that the content is not suitable for children, and we ask that any copies are kept out of children's reach.

The PTA will ensure that all future book selections and gifts available for purchase are carefully checked for age-appropriateness. Thank you for your understanding and continued support.

PTA – Thank you

Thank you to everyone who donated empty chocolate tubs. All tubs have now been taken to ASDA to support their fundraising for Macmillan Cancer Support. We are no longer collecting tubs at school; however, you can still take them directly to ASDA if you wish to donate.

PTA Upcoming Events

- **Friday 13th February – Doughnut Sale** 🍩

Doughnut sale after school for £1 each.

- **Thursday 26th February – Pre-Loved Uniform Sale**

A great opportunity to purchase good-quality second-hand school uniform at low cost.

🕒 From **3:10pm outside the hall**, the sale will also include pre-loved World Book Day costumes.



Curriculum & Support Resources

Children's Curriculum Enrichment Events – Curious to see what the children have been up to?

If you're interested in reading about the exciting activities and experiences our learners have taken part in, please follow the link: [🔗 Curricular Enrichment Info](#)

Child and Family Support Worker – Tips and advice on... 'Parenting Without the Constant Comparison'

[🔗 Support Resources](#)

Family Information and Services Hub (FISH)

Find information about what is happening in your local area, including how to access services, organisations and activities across **Hampshire**, as well as advice and support available for families, including **SEND support**. Through the **FISH website**, you can:

- ☒ Search for **local activities and events**
- ☒ Access **support groups** for parents and carers
- ☒ Find information on **childcare, education and short breaks**
- ☒ Explore guidance on **SEND services, funding, transport and inclusion**

The FISH website is a helpful starting point for connecting with local services and support available to families.

FISH website: [Connect to Support Hampshire - family-information-and-services-hub \(FISH\)](#)



Parents and carers



Hampshire
County Council

Educational
Psychology

Our confidential telephone line is a free way for parents and carers in Hampshire to access information from **Educational Psychologists**. We are on hand to talk through the problems facing you and your child, whether that's by listening to you think aloud, giving you helpful strategies, or signposting you to other contacts or services.

North 01252 814835

(Basingstoke & Deane, Test Valley North)

East 01252 814729

(East Hampshire, Rushmoor & Hart)

South 023 9244 1497

(Fareham, Gosport, Havant)

West 01962 876239

(Winchester, Eastleigh, New Forest, Test Valley South)

Wednesday & Thursday

9.30-11am

term time only



For more information about our service, visit our website:
www.hants.gov.uk/educationandlearning/educationalpsychology



Scan the QR code:



Educational Psychology

Schools • Parents and carers • Young people

Parents and carers

We're here to support your child. This includes providing you with the information you need to help them too. So, if your child or young person is already working with our Educational Psychologists (EPs) or you're looking for more information about who we are and who we support, we are here to answer your questions.



Who we support

Learn more about what children we support and how we work.

[Find out more](#)

When we get involved

Find out when and how educational psychologists might become involved.

[Find out more](#)

What to expect

Explore the consultation and assessment process for your child.

[Find out more](#)

Further information

Learn about other ways that we can support you and your child.

[Find out more](#)

Summary of Future Dates for the Diary

4 February	NEW 'Book Look' Parent Drop-in for Years 1 – 6 (Year F are updated through Tapestry) between 3:15 and 3:35pm.
5, 10 & 11 February	Parents Evenings by appointment
13 February	PTA - Doughnut Sale £1 each
16 to 20 February	Half Term
26 February	PTA - Pre-loved Uniform Sale
5 March	NEW World Book Day – Dress up (Optional)
16 March	INSET Day – School closed for staff training
30 March to 10 April	Easter Holiday
13 April	Children return to school



Feedback - as you know, we welcome feedback all year round so please continue to share your comments, suggestions or questions with us via our website

 [Feedback Form](#)