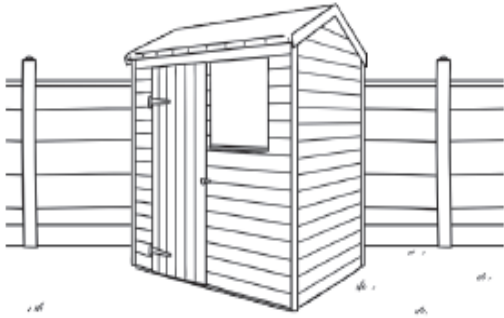
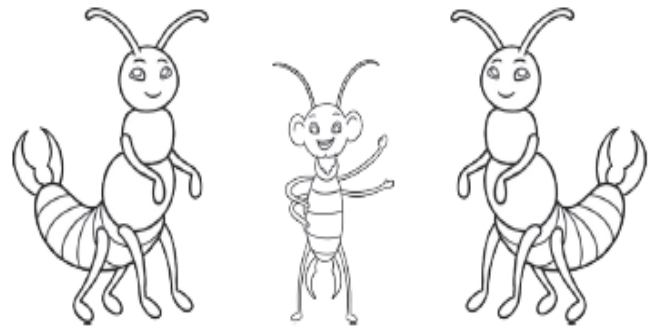


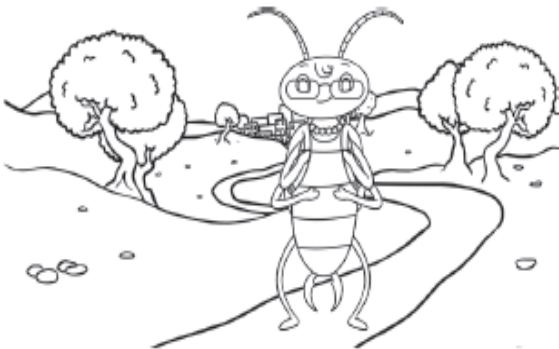
This week we will be learning about two different sounds. They are the 'ear' phoneme and its alternative spellings and the 'z' phoneme that can be spelt in alternative ways as well. To get us started, read this 'ear' phoneme story and try to spot all of the words that contain the phoneme 'ear'. There are 23 words but some of these words are repeats! Once you have done this, create your own story using these words. It can be as silly as you want!



At the rear of a shed, there lived a family of earwigs. There were three dear little children that had been born at the start of the year.



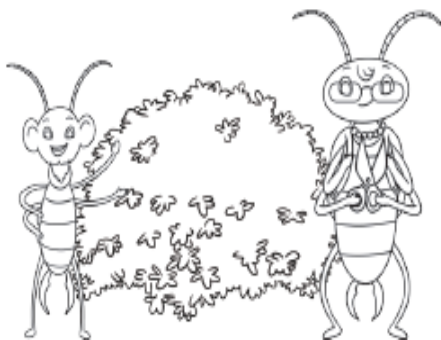
The smallest, called Sid, was clearly different: he had a beard and two big ears! The mother earwig always kept the children near.



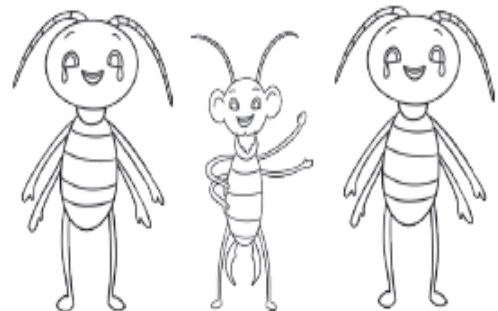
But one afternoon her fear came true! She got home and Sid was not near! So she went to find him, taking all her gear (and some glasses to help her see clearly).



When she reached a nearby bush, she could hear something. She put on her glasses and saw Sid. He was stuck. His beard was stuck on a thorn!



Never fear! Mummy Earwig to help Sid! She looked in her bag of gear and found some shears to cut the beard!



Sid was glad and his siblings shed a tear when he came home to the rear of the shed.

Tuesday

ERE which has the rhyme, here is a sphere. EER which has the rhyme, leer at the deer

Today we are looking at two alternative spellings of the phoneme 'ear'. Using the words below, sort the words into their spellings. Once you have done this you could create a poster of these words to help you remember the spellings. You could add pictures and lots of colour to help it stay in your brain!

near
sphere
mere
nearly
here

deer
cheer
hear
interfere
sphere

Gear
peer
fear
atmosphere
sincere

ear

eer

ere

Today we want you to practice spelling a selection of words all containing the 'ear' sound. Below, there are some words that you need to put into sentences. You can choose whether to write onto the sheet below or practice them in your books if you need more space. If there are some words you haven't been able to practice in the sentences, you could practice these using any of our Year 2 spelling strategies.

'ear' Graphemes Spelling Activity

1. Write sentences using the spelling words below.

Remember that sentences begin with a capital letter.

near

dear

year

tier

sphere

2. Write the words underneath the pictures. Each word contains either the 'ear', 'eer' or 'ier' spelling.

sphere

pier

cheer

year

steer

tier

deer

fear

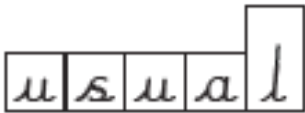


Thursday S has the rhyme, vision watching the television

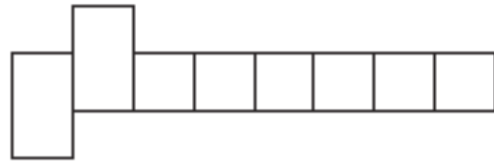
For the next two days, we would like you to look at the sound z. In most words it is spelt z such as zoo, but some of the time the z sound is spelt s. Can you come up with a rule to help you remember when to use 's' instead of 'z'? Using the words below, practice your spellings by putting the correct word into the correct shape box. Make sure you only put one letter in each box. If you fancy a challenge, spot 2 words that rhyme and write them into a sentence.

| | | | | |
|------------|----------|----------|----------|---------|
| television | treasure | usual | division | vision |
| pleasure | measure | occasion | usually | leisure |

1.



2.



3.



4.



5.



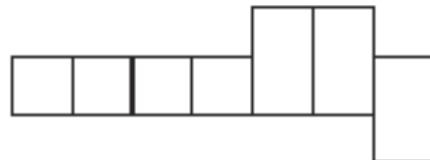
6.



7.



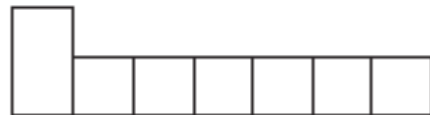
8.



9.



10.



Friday Z SPELT SE has the rhyme, more cheese please.

Sometimes, when a word ends in 'se' and there is a vowel before it, it sounds like a z. Although be careful as this doesn't always apply! Take a look at these words in the table below and complete the Look, Cover, Write, Check to help you practice these spellings. Once you have done this, create some sentences using the words making sure you use the correct punctuation.

| | look | say | cover | write | check | correction |
|---------|------|-----|-------|-------|-------|------------|
| please | | | | | | |
| cheese | | | | | | |
| noise | | | | | | |
| pause | | | | | | |
| ease | | | | | | |
| tease | | | | | | |
| phrase | | | | | | |
| nose | | | | | | |
| Chinese | | | | | | |
| close | | | | | | |
| use | | | | | | |